

## CHECK

# Activity Information

Check the Information Boards in front of each establishment.

**ProAct**  
Exclusive activity for members of KidZania Professional.

**Photo Service**  
Staff will take a purchaseable activity photo.

**E@K Activity**  
Activity in English from start to finish.

**Map No.**

**Establishment Name**

**Activity Name / Contents**

**Capacity**

**Duration(min)**

**Suggested Age**

**+Z ...Amount to Earn**  
**-Z ...Amount to Pay**

**Allergy Information**  
Shows allergens used in the activity.

- If you have any food allergies, please be sure to confirm the "Allergy Information".
- Food made during activities must be eaten inside KidZania.
- For your safety, please do not run inside of KidZania.
- If you have any questions, please contact a staff nearby.

## NOTES

## To Guardians:

### Temporary Exit

If all kids in your group are 6 years old or above, all guardians can temporarily exit together.

※ At least one adult must stay inside of KidZania if any kids are less than 6 years old.

### English Programs

KidZania values providing kids with daily English programs.

Check the details on the Official Website!



### Baggage Storage Fee

Bags and items can be stored for a fee at the entrance and Parents Lounge.

※Please note that items cannot be taken out and returned during storage.

### Photo Service

KidZania's professional photo staff will take pictures.

Check the details and how to purchase!



During Your Birthday Month!

## Birthday Benefits



Get a Birthday Card and a sticker by telling the staff at an establishment your age and that it is your birth month.

### Benefit 1

#### Free Activities!

Eligible at -Z Establishments

※ Discounts cannot be applied at the Department Store, Securities Company or for special events.

### Benefit 2

#### Secret Present!

Please come to the Main Square at 1:00pm or 7:00pm.

※ Times may vary.

# KidZania Tokyo City Guide

Work, Play, and Learn through real-world experiences!

## 3 STEPS

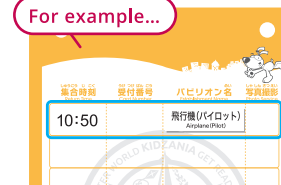
## How to Join Activities

### 1 Go to the Establishment that You Want to Experience the Activity



### 2 Use Your JOB Schedule Card to Make a Reservation

For example...



- The duration of the activity is shown on the Information Board at each establishment.
- Activity reservation times cannot be chosen.

CHECK!

Please check the next starting time shown at the establishment.



### 3 Find another Activity or Experience<sup>(★)</sup> that Finishes before the Return Time

For example...



- Activity information is displayed on the Activity Information Signage.
- You can do any activity that finishes before the return time one at a time.

CHECK!

Activity Information Signage is shown by this mark on the map!



## ★ Non-Reservation Experiences | Duration | About 5 - 15mins

### Bank Customer

Open a bank account so you can deposit kidZos. Use the ATMs with the cash card you receive.

### Department Store Customer

Use kidZos to go shopping. Prices start from 50 kidZos.

### Job Information Center Customer

Learn basic information about available jobs. Find a job or activity that suits you best.

## IMPORTANT

## Basic Items

### JOB Schedule Card

Needed for reserving activities. Kids need to give it to the staff by themselves.



### TC Traveler's Check

Worth 50 kidZos inside KidZania. Use it for payments and receive change back.



### Z KidZo

Local currency (money) used inside KidZania. You can also use your kidZos at other KidZania facilities around the world.



## How to Use KidZos

- Go shopping at the Department Store.



- Spend kidZos at the -Z establishments to receive services.
- Open a bank account, get a cash card and withdraw kidZos at ATMs.



KidZania Tokyo  
City Map

Services

Restroom

Women's Restroom

Barrier-Free Restroom

Diaper Changing Table

Baby Care Center

Stroller Parking

First Aid

Drinking Fountain

Parents Lounge

Vending Machine

Charger (+Fee)

KidZo ATM

Activity Information Signage

Information Desk

AED

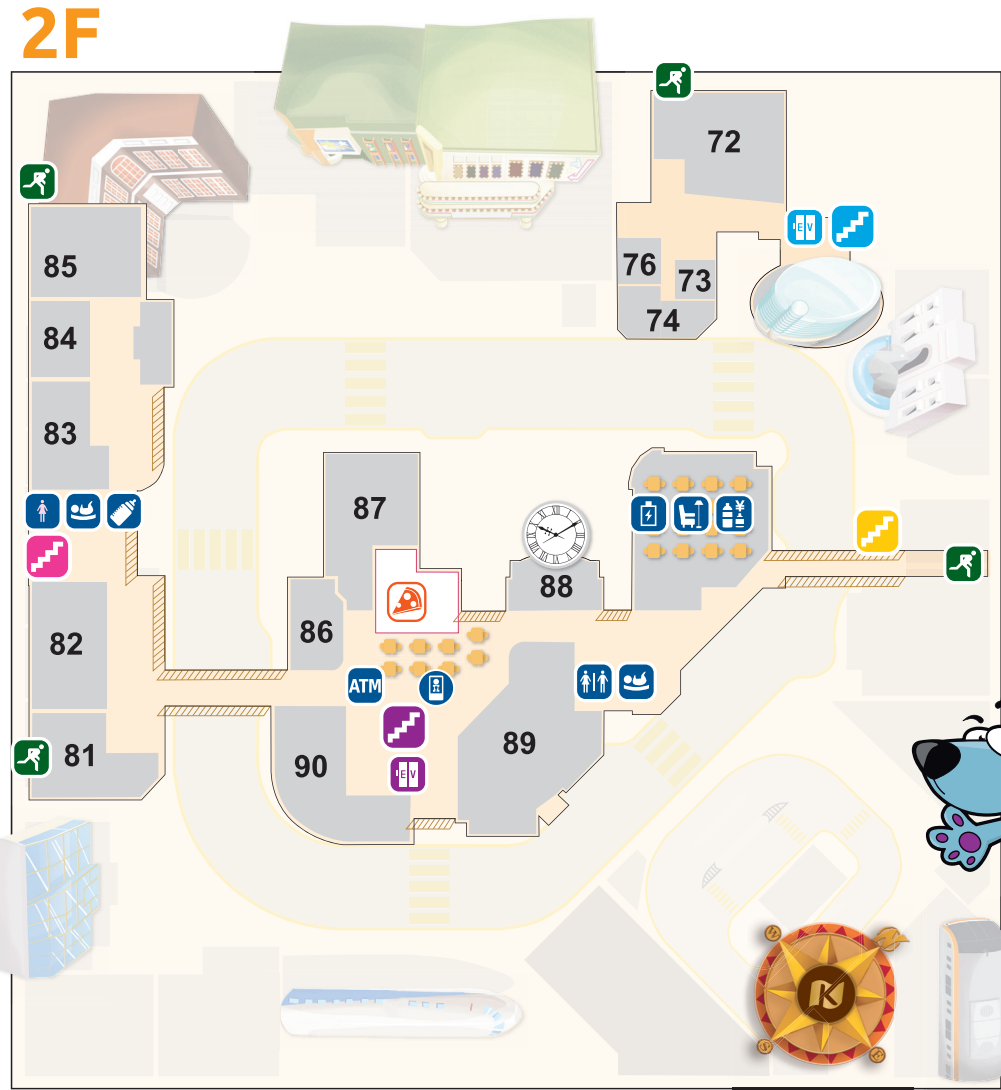
Legend

Earn kidZos

Spend kidZos

Adults OK

Toddlers OK



Access

Stairs ※4 Locations

West Stairs

North Stairs

Central Stairs

South Stairs

Elevator

Emergency Exit

Food & Shopping

RF1

R1F

SOZAI

SCHAU ESSEN

PIZZA-LA EXPRESS

MOS BURGER

National Store

Establishment

1F

1

+Z

 Airplane Cabin Attendants Only

2

+Z

 Hamburger Shop

3

+Z

 Toys & Hobby Factory

4

+Z

 General Trading Company

5

 Event Space 1

6

+Z

 Patisserie Shop

7

+Z

 Frozen Food R&D Center

8

+Z

 Ponzu Factory

9

+Z

 Sweets Factory

10

+Z

 Science Lab

11

+Z

 Bakery

12

+Z - Z

 Horse Center

13

 Theater

+Z

 Fashion Show

+Z

 Space Show

+Z

 Wedding Ceremony

+Z

 Comedy Show

+Z

 Parade

15

-Z

 Softcream Shop

16

+Z

 Soap Factory

17

18

+Z

 Pizza Shop

19

+Z

 Sausage Factory

20

+Z

 Construction Equipment Development Center

21

+Z

 Police Department

22

+Z

 Courthouse

23

 Department of Motor Vehicles

24

+Z

 Car Design Studio

25

+Z - Z

 Car Rental

26

+Z

 Car Life Support Center

27

+Z

 Gas Station

28

+Z

 Shoe Factory

29

+Z

 Job Information Center

30

+Z

 Beauty Studio

31

+Z

 Energy Company

32

+Z

 Dental Clinic

35

+Z - Z

 City Tour Bus

36

+Z - Z

 Department Store

38

+Z

 Telecom Company

39

 Event Space 2

40

+Z

 Game Company

41

+Z

 Care Support Center

42

+Z

 Salad Shop

43

 Hospital (Exit)

44

 Shopping Alley / Flower Shop

45

 Shopping Alley / Stamp Shop

46

 Shopping Alley / Art Supply Shop

47

+Z

 Call Center

48

+Z

 Bank

49

+Z

 Courier Service

50

+Z

 Security Center

51

+Z

 Fire Department

52

+Z

 Subway

2F

72

-Z

 Soccer Stadium

73

-Z

 Watercolors Shop

74

+Z

 Pencil Factory

76

+Z

 Glasses Shop

81

-Z

 Printing Company

82

+Z

 PC Factory

83

+Z

 Electronics Store

84

+Z

 Publishers

85

+Z

 Milk House

86

-Z

 Securities Company

87

+Z

 Commercial Studio

88

+Z

 City Clock

89

+Z

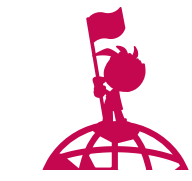
 Hospital

90

-Z

 Sports Club

Get Ready  
for a  
Better  
World



Official Suppliers

ADAL

Catherine Cottage

au

五藤光学研究所